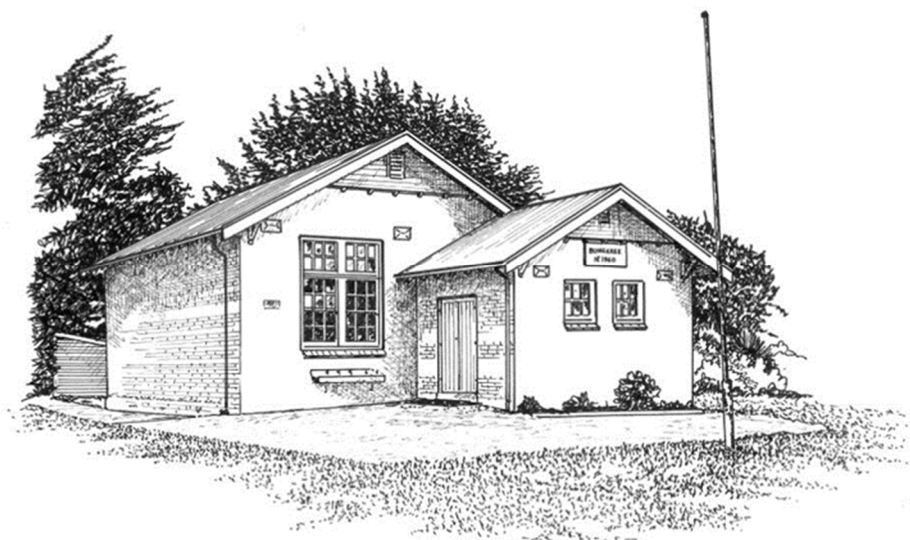


Parent Information Handbook 2021



Bungaree Primary School

School Number 1960

348 Bungaree-Wallace Road

BUNGAREE, Victoria 3352

Phone 5334 0253

Principal Catherine Barnes

eMail bungaree.ps@education.vic.gov.au

Web www.bungareeps.vic.edu.au

December, 2020

Welcome to Bungaree Primary School

It is my pleasure to welcome you to Bungaree Primary School, where it is my privilege to be the principal of such a wonderful small school (with big opportunities!).

Bungaree Primary School is an inviting, inclusive and vibrant school, offering quality learning opportunities in an engaging learning environment where we aim to achieve the best possible outcomes in student learning. Our school provides a learning environment where children can have fun, progress in their learning and develop their creativity and curiosity. We offer a school setting where our children feel cared for and valued.

We are particularly proud of the Bungaree Primary School's reputation as a caring school community, allowing children to grow emotionally, intellectually and physically in a safe, attractive and caring learning environment. This is supported by our four school values which we walk and talk in our little school community - Respect, Positivity, Determination and Creativity.

In 2021, our school will be organised into one, differentiated learning community with a focus on student learning:

Ms Kentish will provide enhanced and personalised learning for the Juniors;

Miss Barnes will provide enhanced and personalised learning for the Seniors.

Bungaree Primary School provides many specialist programs that are supported with professional teachers and facilities for The Arts, Physical Education and Languages Other Than English (Auslan). Furthermore, the students have access to an exciting array of extra- and intra-curriculum programs that enhance personal and academic achievement within the school, and also in partnership with other small schools in the Wathaurung Network and Moorabool Collegiate Group.

I proudly invite you to explore our school, Facebook page and website to become familiar with the school's many exciting opportunities, and to experience the Bungaree way.

Go Bunga!

Catherine Barnes

Principal

About Bungaree Primary School

Bungaree Primary School is located in a small rural town located in the Central Highlands of Victoria, 10 minutes east of Ballarat, and serve the towns of Bungaree, Wallace, Millbrook, Springbank and surrounding areas. The area is famous for its rich farming soil and beautiful rural vistas.

The school's motto is "Together we can grow", which reflects on the strong community feel of our school and our school values of Respect, Positivity, Determination and Creativity. We believe that educating our students is a shared responsibility between our teachers, parents, community members and most importantly the students themselves. Our vision is for our students to become successful learners, confident and creative individuals, and active and informed citizens. The school works hard at providing the best for all students.

Facilities at the school include a Main Building which consists of an office space, one classroom and a staff room. A two-class portable building, large gymnasium and another portable with an art room also provide a variety of spaces for learning in the school. The refurbished classrooms are equipped with the latest in computer technology, and we have excellent outdoor areas including playgrounds, oval, and raised vegetable garden. The school has solar panels installed on the gymnasium shed and this effectively supplies electricity and powers the needs of the school in an environmentally sustainable manner.

Our staff professional learning is focused on effective teaching and differentiated learning. The learning is based on our strategic priorities:

- Excellence in Teaching and Learning (Building Practice Excellence, and Curriculum Planning & Assessment); and
- Positive Climate for Learning (Empowering Students & Building School Pride).

All students are supported by an Individual Learning Plan developed by teachers in partnership with parents. The school is supported through the DET Regional Office on a needs basis for speech pathology, psychology, school nurse and Visiting Teacher (special needs) support services.

The school has strong community and family support, with parents involved across the school as appropriate. School events and information nights are well attended and supported, and parents also have opportunities to voice opinions and ideas through School Council and the Parents and Friends Association.

Staff



Miss Catherine Barnes

**Principal &
Classroom Teacher**

Teaching and School Administration
Monday–Friday



Ms Marnie Kentish

Classroom Teacher

Teaching and Tutoring
Monday-Thursday



Ms Kari O’Gorman

MARC Van & Classroom Teacher

Teaching Friday (fortnightly)



Ms Anne Blackwood

Education Support

Monday and Tuesday



Mrs Angela Burgoyne

Business Manager

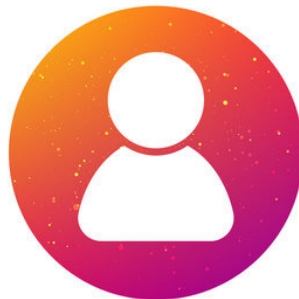
Tuesday and Wednesday



Mrs Michelle Barnes

Education Support

Wednesday, Thursday and Friday



To be appointed

School Chaplain

Part-time

A-Z of School Life at Bungaree

ABSENCES/ATTENDANCE

Children should attend school unless there is a genuine excuse, as regular attendance is essential to maximise a child's learning. Students are expected to be on time for each school day. If a child is absent, a phone call to the school on the day is required, and/or a written note to the classroom teacher. If a student is absent without notification, a phone call will be made home to seek reason. Students should not come to school if unwell. We promote the DET initiative of "Every Day Counts". Foundation (Prep) children have permission to attend school only four full days each week up until March—they stay home each Wednesday.

Each morning the school is supervised from 8:45am. We ask parents to ensure that children do not arrive at school before this time. The playground is supervised by staff during recess and lunch breaks. From 8:50am students move inside and prepare for learning to commence at 9:00am. The school day ends at 3:30pm. After school, the collection of students is supervised by staff until 3:45pm.

ANAPHYLAXIS

Students who may suffer from diagnosed allergies must provide the school with an in date Epipen and a written up to date Anaphylaxis Management Plan. Please contact the Principal for further details.

ANZAC SERVICE

Our school is a lead partner in the Bungaree Community Anzac Service, held at 8:00am each Anzac Day at the Bungaree Cenotaph (at the Footy Club.) We ask that where possible, families attend and show our respect as we commemorate our fallen and current servicemen and servicewomen. Many students will have special roles during the service.



ASSEMBLY

A whole school Assembly is conducted on Monday mornings at 9:00am in the Middle Room. During Assembly, we share news and updates for the week, encourage students to speak with and listen to each other, and celebrate student learning. Parents are most welcome to attend when COVID restrictions allow.

ASTHMA

Children who suffer from Asthma must provide the school with a written up to date Asthma Management Plan. Asthma Plans must be updated **every year**. Please contact the Principal for further details.



BOOKS, PENS, PENCILS AND MATERIALS BOOK PACK

Individual supplies for use in the classroom are provided at the start of the school year as nominated by each family in the annual Parent Payments/charges. Families who choose to purchase these individually must arrange to have stationery supplied to the school at least three days before the start of the school year. The book pack component of the school fees covers the cost of student workbooks. Families are asked to purchase two boxes of tissues for classroom use, and deliver these in the first week of school.

BICYCLES

Bicycles may be ridden to school if your child is a competent rider who knows the road rules well. Road traffic authorities recommend that children under 9 years of age do not ride in traffic. Helmets are compulsory. Children who do not wear helmets will not be permitted to bring their bikes into school. Bikes are stored at the bike rack during the day and are not to be ridden in the school grounds unless we are taking a Bike Education program.

A-Z of School Life at Bungaree



BOOK CLUB

Scholastic Book Club operates throughout the school with two issues being offered to students each term. The Book Club offers popular titles at discounted prices and the school earns commission from all sales and can be ordered online or delivered to the office. There is no obligation to purchase books.

BREAKFAST CLUB

Breakfast Club will take place every Thursday and Friday in 2021. Children can arrive and enjoy breakfast free of charge with staff and peers from 8:30am-8:50am in the Art Room/Kids Kitchen.

CHILD SAFE STANDARDS

All schools need to be compliant with the VRQA Child Safe Standards. The school has developed a Child Safety Code of Conduct, and this demonstrates our school's commitment to Child Safety within the school and the community.

CONFIDENTIAL STUDENT INFORMATION

This information is collected for each child in the school. This enables contact with parents or their agents in the case of illness or accident. In recent years, the school has also been required to collect information about parent jobs and employment. Parents should advise the school without delay, of any changes to their own or their contact's address or telephone number.

CONTACT WITH SCHOOL

The school telephone number is 5334 0253. If contacting the school by telephone, it would be appreciated if calls could be made before and after school, or at the lunch break as all teachers have teaching commitments and student learning is our priority. **Please contact the school at any time in an emergency.** Regular contact with staff is desirable and encouraged. Complaints or problems of a serious nature should be directed to the Principal.



A-Z of School Life at Bungaree

CONVEYANCE ALLOWANCE

A Conveyance Allowance is available for eligible students who live more than 4.8km by the shortest practicable route from the nearest government school or a student who lives more than 4.8km to the nearest bus stop where that bus travels to the nearest government school. If you think you may be eligible please contact the school to discuss or to complete appropriate forms.

CURRICULUM

The School's curriculum is based on the Department of Education and Training expectations - Victorian Curriculum. The learning areas in the curriculum are:

The Arts

- Dance
- Drama
- Media Arts
- Music
- Visual Arts
- Visual Communication Design

English

Health and Physical Education

The Humanities

- Civics and Citizenship
- Economics and Business
- Geography
- History

Languages (L.O.T.E.) Auslan

Mathematics

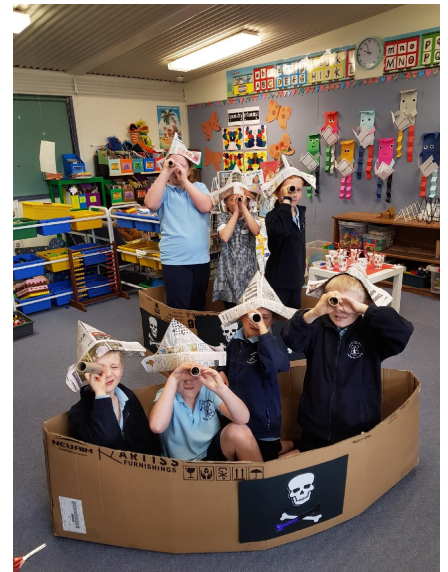
Science

Technologies

- Design and Technologies
- Digital Technologies

M.A.R.C. Van (Mobile Library)

At Bungaree Primary School our priority areas are Literacy and Numeracy. We focus on activities which challenge and stimulate all children.



DRINKS

Named plastic drink bottles with pop tops are suitable—the school will provide one drink bottle for each child's use in the classroom at the start of the school year. For safety reasons, glass bottles are not to be brought to school. Water is the best drink; soft drinks and energy drinks are not permitted at school. Students are permitted to have plastic drink bottles containing water into the classrooms but they must have a pop top lid.

EMERGENCIES

The school has a very effective and well documented Emergency Management Plan in case of emergency at school, and practice emergency drills with students and staff each term. Parents and carers will be kept informed of updates and actions during any emergency at the school via phone/text message.

END-OF-DAY-DISMISSAL

Please ensure that children are picked up promptly when school is dismissed at 3:30pm. If there are any changes to normal pick-up arrangements, teachers should be notified and children clearly informed of those arrangements. Note: Dismissal on the last day of each term will be earlier and information related to this will be provided in the newsletter.

A-Z of School Life at Bungaree

ENROLMENT

Bungaree Primary School takes enrolments throughout the year. Enrolment is open to children who attain the age of five (5) years by April 30th. Parents may enrol their child by calling into the school to collect an Enrolment Form, visiting our website or by phoning the school and requesting a form be mailed to you. We are happy to do a school tour by appointment. Please return the completed Enrolment Forms to the school office, along with a copy of your child's birth certificate and certificate of immunisation.



EXCURSIONS AND CAMPS

Parents will be informed of planned excursions, camps, sports trips, films, etc. Parents are required to provide current medical information about their child prior to an excursion. Because of the size of our school, private transport is often used. Parents and staff who offer to transport students need to have a current driver's licence and comprehensive car insurance. The drivers will need to supply evidence of both of these before students can be transported. Camps and excursions are an integral part and extension of the school curriculum. Parental permission is required for these activities except where the excursion is in the immediate area close to school. As these programs involve cost which must be borne by the parents, information is distributed in sufficient time for parents to arrange payment. Payment plans are available for camps.

HEAD LICE

Periodically, there are outbreaks of head lice, and contrary to popular belief, they do not need dirty heads to survive. They will infect any head. If we are aware of the problems, we can soon solve any outbreaks.

Every parent is requested to:

- Inspect their children's hair at regular intervals.
- Inform the school immediately whenever lice are detected.

If one member of the family has head lice, all members of the family should be treated. There are several lotions/foams available from your local chemist. In the interest of health, hair should be kept tied back and out of eyes.



HOMEWORK

Homework is given each week, which includes our Home Reading Program. Students are required to read and practise their spelling words every night. Other homework tasks may be set at the teacher's discretion.

HOT LUNCHES

Hot (or other) lunches can be ordered and paid through the Bungaree General Store each Friday, and these will be delivered to school for students and staff to enjoy. No money or orders will be received at school on Hot Lunch days.

HOURS OF SUPERVISION

Children will be supervised between 8:45am and 3:45pm. Supervision outside these hours cannot be guaranteed and every effort should be made to ensure that children are not at school prior to 8:45am and collected prior to 3:45pm.

ILLNESS/INJURY AT SCHOOL

All staff members are trained in First Aid Level 2. If there is a serious injury, we will phone for an ambulance and parents will be contacted. In the event of head injuries, parents will be notified to take the child home, as head injuries may result in concussion. Minor injuries and illnesses can often be treated at school. Staff will assess the situation and apply first aid where appropriate.

A-Z of School Life at Bungaree

IMMUNISATION RECORDS

All students enrolling in schools or transferring between schools are required to provide proof of immunisation.

INFECTIOUS DISEASES

Please refer to the list of “Minimum Period of Exclusion from Schools for Infectious Diseases Cases and Contacts.”

JUNIOR SCHOOL COUNCIL

Students from Grades 3, 4, 5 and 6 work together to improve aspects of our school and to participate in fund raising and events through Junior School Council. The Students in the senior years have run collaborative Student-led Community Projects over the last few years, which have been a highlight for our school each term.

LIBRARY

The MARC Library Van visits the school every second Friday. The program for all students is based around linking literature to the arts. Students can borrow books on personal interest which can be used in the classroom the following week.



LOST PROPERTY

All personal property (clothing, hats, bags, drink bottles, etc.) should be clearly labelled to ensure ease of identification and return of lost items. If your child has misplaced anything, please check with the classroom teacher or the lost property tub in the office. Students are encouraged to be responsible for the care of their own belongings at school.

LUNCHES

Children are supervised whilst eating their lunch and we strongly encourage healthy snacks and lunches, in the interest of children's health. Please do not send noodles/soups that require boiling water. Food WILL NOT be heated in the microwave. The Parents and Friends Association organises a lunch every second week.

MEDICATIONS

If children are required to take medication while at school, parents are requested to provide the class teacher with a written authority that includes details of medication, dosage and any likely reactions (form available with our Medication Policy.) All medication must be labelled with your child's name and handed to their teacher.

MOBILE PHONES

Students should not bring mobile phones to school. If they are needed for some reason (eg for an emergency or special occasion) they should be handed to the teacher or Principal for safe-keeping and collected at the end of the day.

MUSICAL EVENTS

Our students participate in the 'Moorabool Kids Day Out' which is an initiative that involves local schools within our Collegiate Group Network. The day is usually in Term 3 and involved performing on stage in Bacchus Marsh in a 'kids only' arrangement.



A-Z of School Life at Bungaree



NEWSLETTERS

Newsletters are our main source of informing you about what is happening in the school. Newsletters are sent home with the eldest child in the family once a fortnight usually on a Friday. Other notices may be sent home during the week as needed. Please encourage your children to take responsibility for giving you the newsletter/notices that are sent home and then please read them thoroughly.

OFFICE HOURS

The school office is unattended on most days but staff are available 8:30am to 4:00pm. The best times to call the school, (*except in an emergency situation*) is between 8:30am - 9:00am or 3:30pm - 4:00pm.

PARENTS AND FRIENDS ASSOCIATION

All parents are invited to take part in the activities of this group. Membership of the Parents and Friends Association is open to any parent/guardian who has a child attending the school. They meet regularly and the dates are published in the school's newsletter. The major role performed by the Parents and Friends Association is to provide special activities and events for the students. They organise, special lunch days and fundraisers in order to raise monies that can then be used to purchase additional resources for the children.

PARENT HELPERS

Parent helpers are a great asset to our school and are very welcome to take part in the class programs if teachers request assistance or invite parents to participate. Any parent wishing to assist in the classrooms or excursion, must have a current 'Working With Children Check'. When assisting in the classroom you must sign in and out at the office.

PARKING

Parents are requested to park facing the road (rear of the vehicle to the hedge), leaving sufficient space for pedestrians and cyclists to pass behind their vehicle. Please do not park in front of any gates.

PERMISSION FORMS AND PAYMENT

Excursions, camps and special events require signed parental permission forms. These forms must be returned to school prior to the event, with payment enclosed or paid via bPay.



A-Z of School Life at Bungaree

PUBLIC HOLIDAYS 2021

1st January	New Year's Day	25th April	Anzac Day
26th January	Australia Day	14th June	Queen's Birthday
8th March	Labour Day	2nd November	Melbourne Cup Day
2nd April	Good Friday	25th December	Christmas Day
5th April	Easter Monday	26th December	Boxing Day

PUPIL-FREE/CURRICULUM DAYS

The school is entitled to four Pupil-Free Days per year for Professional Development and planning, and in accordance with this, the first day of the school year is a Pupil Free Day. The other three days occur throughout the year. Parents are notified of these dates through the school newsletter.

PUPIL PROGRESS REPORTS

Parents are provided with written reports of their child/children's progress at the end of Term 2 and Term 4. Parent/teacher interviews are conducted at the end of Term 1. Student-lead Conferences are held at the end of Term 3. Parents should feel free to discuss pupil progress or concerns with their classroom teacher at a mutually convenient time.



RESILIENCE PROJECT & RESPECTFUL RELATIONSHIPS

Our school learns social and emotional skills and building student resilience through The Resilience Project. The basis for learning is that of gratitude, empathy/kindness and mindfulness. These pillars will be referred to and explicitly taught in the classroom to develop happy and successful learners. Our school also leads a cluster of small schools in the Respectful Relationships program, providing learning opportunities that nurture a community of respect for all.

SCHOOL CHAPLAIN

A school chaplain will be commencing part-time in 2021. The chaplain aims to support the emotional wellbeing of students; and provide pastoral care services and strategies that support the emotional wellbeing of our school community.

SCHOOL CONCERT/END OF YEAR CELEBRATION/GRADUATION

At the end of the year the students perform in the School Concert, we recognise achievements of the school and celebrate with a shared family tea.

SCHOOL COUNCIL

The School Council Members include both parents and staff, all of whom have a strong interest in the school and the desire to contribute to the ongoing improvement of the school. The Council meets on a twice/term basis to discuss various matters and to receive reports. Parents are asked to consider a role on the School Council in the coming years as it is a great opportunity to have a direct involvement in your child's education. Our School Council President 2020/21 is David Lee.

A-Z of School Life at Bungaree

SCHOOL NURSE

School Medical Officers (School Nurse) examine all Foundation children, plus any others that may be referred by teachers. This service needs parental permission, but it is very important. Many minor concerns are often detected before the child's health or schooling is affected.



SCHOOL TERMS 2021

	Term Dates	School Holidays
Term 1	27th January–27th March 27th January (teachers resume) 28th-29th January–start up interviews 1st February (students resume*) *Foundation Students no Wednesday's until March	2nd April–18th April
Term 2	19th April–25th June	26th June–11th July
Term 3	12th July–17th September	18th September–3rd October
Term 4	4th October–17th December	18th December–28th January 2022

SICK CHILDREN

The school does not have the facilities to accommodate ill children. The best place for a sick child is at home. This aids in your child's recovery and minimises the spread of infection to the other students. Please remember to ring the school to notify us of your child's absence.

SMOKING

Smoking is not permitted by any person in the school buildings or school grounds, or outside the school gates under any circumstances.

SPORT

We compete in sporting events with the Wathaurung District, a cluster of small schools aiming to provide opportunities for all students. An athletics carnival is held in first/second term each year. We also participate in Cross Country, the Wathaurung Winter Sports (Years 3-6) and other sports as they arise. All children are given the opportunity to participate. All sports events are scheduled so that students may gain selection for regional, then state sports events.

STORY DOG

Manilla the Story Dog (a golden labrador) and her handler, Robyn, visit the school each Wednesday morning to listen to Junior students read.



A-Z of School Life at Bungaree

STUDENT BEHAVIOUR

We know that orderly classrooms mean better learning outcomes, and a safe and bully-free environment gives children confidence, connects them to others and allows them to be the best they can be. The school has developed a Student Positive Learning Model to describe good learning behaviours, and a Behaviour Hierarchy that encourages children to behave acceptably in the classroom and playground. Parents will be notified if their child's behaviour is cause for concern. We expect a high standard of student behaviour and regularly discuss expectations with students.

SUNSMART

All students must wear a broad-rimmed hat to prevent sunburn while they are outside in Term 1 and 4 (and on hot days in the other terms.) Hats are available from the school. Sunscreen is also provided.

SWIM AND GYM

Swim and Gym is an important component of our Physical Education program and is conducted once per week in Term 3. Every child is required to attend. We hold this program with Warrenheip Primary School at the Ballarat Aquatic and Lifestyle Centre in Ballarat.

TIMETABLE

The following gives a broad overview of what is undertaken each day.

9:00am	School commences
9:00am–11:00am	Literacy
11:00am-11:30am	Recess
11:30am-1:00pm	Spelling; Numeracy
1:00pm-2:00pm	Lunch
2:00pm-3:30pm	Specialist subjects
3:30pm	Dismissal

TRANSITION DAYS

All families who enrol their Kindergarten child at our school will be sent an invitation for their child to attend our Prep Transition Program - 'Foundation Fun.' The program runs during Term 4 and provides an enhanced opportunity for kindergarten students to transition to big school. A statewide orientation day is held in early-mid December.

UNIFORM

The school has a compulsory uniform.

Clothing

Winter: Navy blue tracksuit with light blue polo shirt, long-sleeved polo shirt and windcheater; winter skort in navy blue; light blue skivvie.

Summer: Navy shorts/skort with light blue polo shirt. Students may also choose to wear a blue and white checked dress uniform. Navy blue broad rim hat—broad brimmed hats with the school logo must be worn during outside play and activities in Term 1 and Term 4.

Art smocks - A suitable smock must be provided to protect school uniforms, and should cover the sleeves (art smocks can be purchased commercially, however an old adult shirt is fine.)

Year 6 windstoppers—these are specially embroidered and ordered only once in Term 1 subject to parent permission and invoiced to families. Costs will be advised.



A-Z of School Life at Bungaree

Footwear

Sturdy, comfortable closed-in school shoes and runners for Physical Education are recommended. Gumboots are highly recommended in wet weather and in Winter. Slippers may be worn in the classrooms.

Please label all children's clothing clearly. Singlet tops, brief tops, brief shorts, thongs, steel-capped boots, open ended-toed sandals and Crocs are not appropriate dress.

Ribbons and hair ties should be in school colours. A watch may be worn. Ears may have studs or sleepers only. Any student wearing jewellery that is deemed by staff to potentially cause injury to the wearer or others will be asked to remove it.

Uniform components can be ordered at any time in the year through our supplier, Rufcut Clothing Australia (202 Lyons Street South, Ballarat.)



VALUABLES

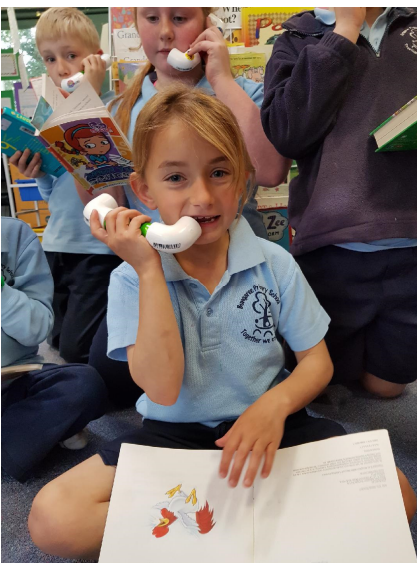
Children are not to bring valuable items- mobile phones, iPods, iPads, cameras, hand-held games etc, to school. Children found in breach of this rule will have their item confiscated.

VISITORS

All visitors must report to the office upon entering the school grounds and meet COVID safe requirements. Visitors are required to sign in and out of the Visitor's Book and wear a lanyard identifying their presence. Parents attending activities during school hours must sign the Visitor's Book. All parents and visitors helping with activities **MUST** have a current Working With Children Check.

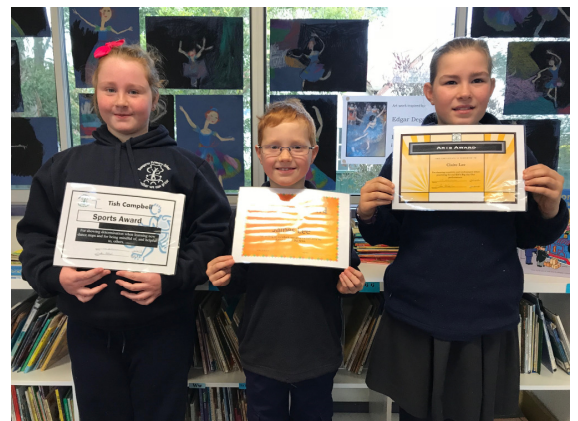
WEBSITE

Our school website contains relevant information including fortnightly newsletters. It can be accessed via the link www.bungareeps.vic.edu.au



WET/HOT/EXTREME WEATHER

The school has a wet/hot weather timetable in place if it rains, snows or is considered extreme heat (or other extreme conditions) at lunchtime or recess. Students play indoors in the Middle Room or Gym under teacher supervision.



Minimum Period of Exclusion from Schools for Infectious Diseases Cases and Contacts

Conditions	2. Exclusion of cases	3. Exclusion of contacts
Amoebiasis (Entamoeba Histolytica)	Exclude until diarrhoea has ceased	Not excluded
Campylobacter	Exclude until diarrhoea has ceased	Not excluded
Chicken Pox	Exclude until fully recovered or for at least 5 days after the eruption first appears. Note that some remaining scabs are not a reason for continued exclusion	Any child with an immune deficiency (for example, leukaemia) or receiving chemotherapy should be excluded for their own protection. Otherwise not excluded
Conjunctivitis	Exclude until discharge from eyes has ceased	Not excluded
Cytomegalovirus Infection	Exclusion not necessary	Not excluded
Diarrhoea	Exclude until diarrhoea has ceased or until medical certificate of recovery is produced	Not excluded
Diphtheria	Exclude until medical certificate of recovery is received following at least two negative throat swabs, the first not less than 24 hours after finishing a course of antibiotics and the other 48 hours later	Exclude family/household contacts until cleared to return by the Secretary
Glandular Fever (Mononucleosis)	Exclusion is not necessary	Not excluded
Hand, Foot and Mouth disease	Until all blisters have dried	Not excluded
Haemophilus type b (Hib)	Exclude until medical certificate of recovery is received	Not excluded
Hepatitis A	Exclude until a medical certificate of recovery is received, but not before 7 days after the onset of jaundice or illness	Not excluded
Hepatitis B	Exclusion is not necessary	Not excluded
Hepatitis C	Exclusion is not necessary	Not excluded
Herpes ("Cold sores")	Young children unable to comply with good hygiene practices should be excluded while the lesion is weeping. Lesions to be covered by dressing, where possible	Not excluded
Hookworm	Exclusion is not necessary	Not excluded
HIV/AIDS virus	Exclusion is not necessary unless the child has a secondary infection	Not excluded
Impetigo	Exclude until appropriate treatment has commenced. Sores on exposed surfaces must be covered with a watertight dressing	Not excluded
Influenza and like	Exclude until well	Not excluded

Minimum Period of Exclusion from Schools for Infectious Diseases Cases and Contacts

Leprosy	Exclude until approval to return has been given by the Secretary	Not excluded
Measles	Exclude for at least 4 days after onset of rash	Immunised contacts not excluded. Unimmunised contacts should be excluded until 14 days after the first day of appearance of rash in the last case. If unimmunised contacts are vaccinated within 72 hours of their first contact with the first case they may return to school
Meningitis (Bacteria)	Exclude until well	Not excluded
Meningococcal infection	Exclude until adequate carrier eradication therapy has been completed	Not excluded if receiving carrier eradication therapy
Molluscum contagiosum	Exclusion not necessary	Not excluded
Mumps	Exclude for 9 days or until swelling goes down (whichever is sooner)	Not excluded
Parvovirus (Erythema Infectiosum Fifth Disease)	Exclusion not necessary	Not excluded
Poliomyelitis	Exclude for at least 14 days from onset. Re-admit after receiving medical certificate of recovery	Not excluded
Ringworm, Scabies, Pediculosis (Head lice)	Re-admit the day after appropriate treatment has commenced	Not excluded
Rubella (German Measles)	Exclude until fully recovered or for at least four days after the onset of rash	Not excluded
Salmonella, Shigella	Exclude until diarrhoea ceases	Not excluded
Streptococcal infection (including Scarlet Fever)	Exclude until the child has received antibiotic treatment for at least 24 hours and the child feels well	Not excluded
Trachoma	Re-admit the day after appropriate treatment has commenced	Not excluded
Tuberculosis	Exclude until receipt of a medical certificate from the treating physician stating that the child is not considered to be infectious	Not excluded
Typhoid and Paratyphoid Fever	Exclude until approval to return has been given by the Secretary	Not excluded unless considered necessary by the Secretary
Whooping Cough	Exclude the child for 5 days after starting antibiotic treatment	Exclude unimmunised household contacts aged less than 7 years and close child care contacts for 14 days after the last exposure to infection or until they have taken 5 days of a 10 day course of antibiotics
Worms (Intestinal)	Exclude if diarrhoea present	Not excluded